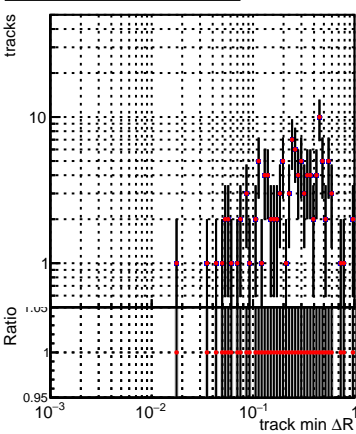
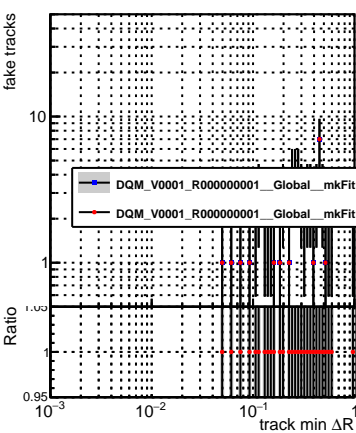
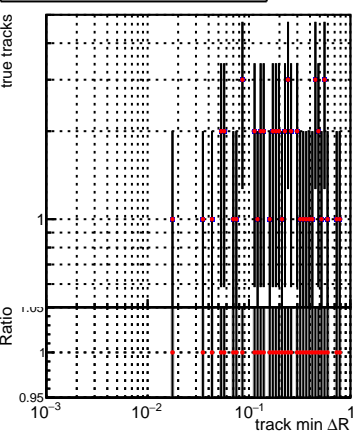


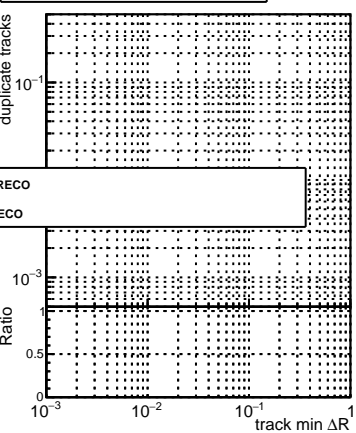
N of reconstructed tracks vs dR



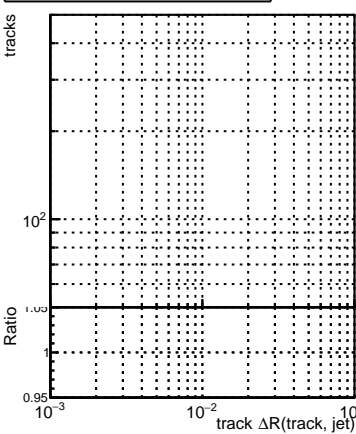
N of associated tracks (recoToSim) vs dR



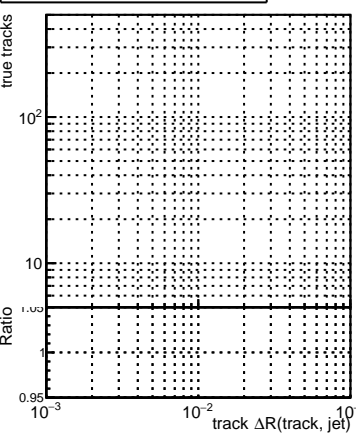
N of associated (recoToSim) loopier tracks vs dR



N of reconstructed tracks vs dR(track, jet)



N of associated tracks (recoToSim) vs dR(track, jet)



N of associated (recoToSim) loopier tracks vs dR(track, jet)

