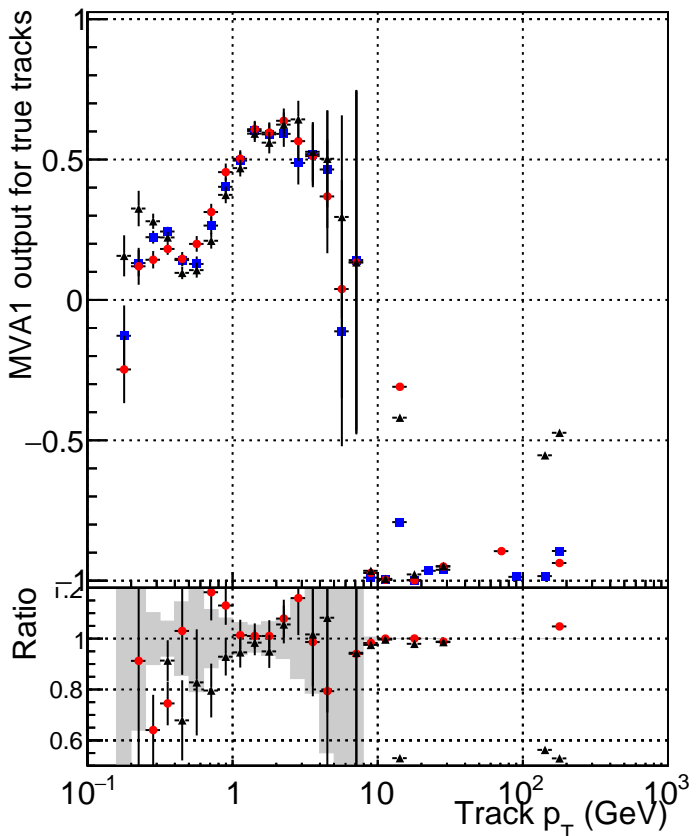
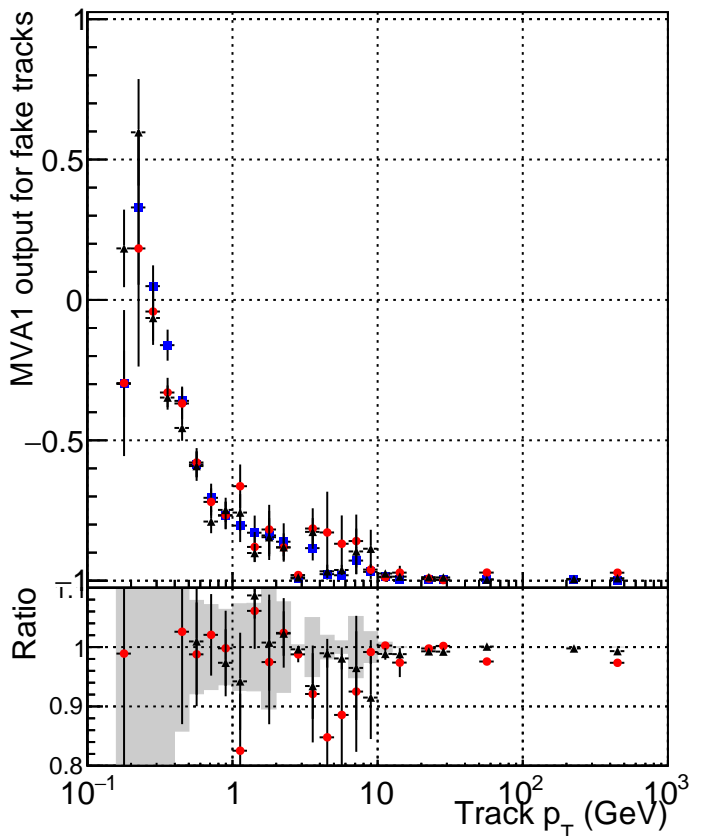


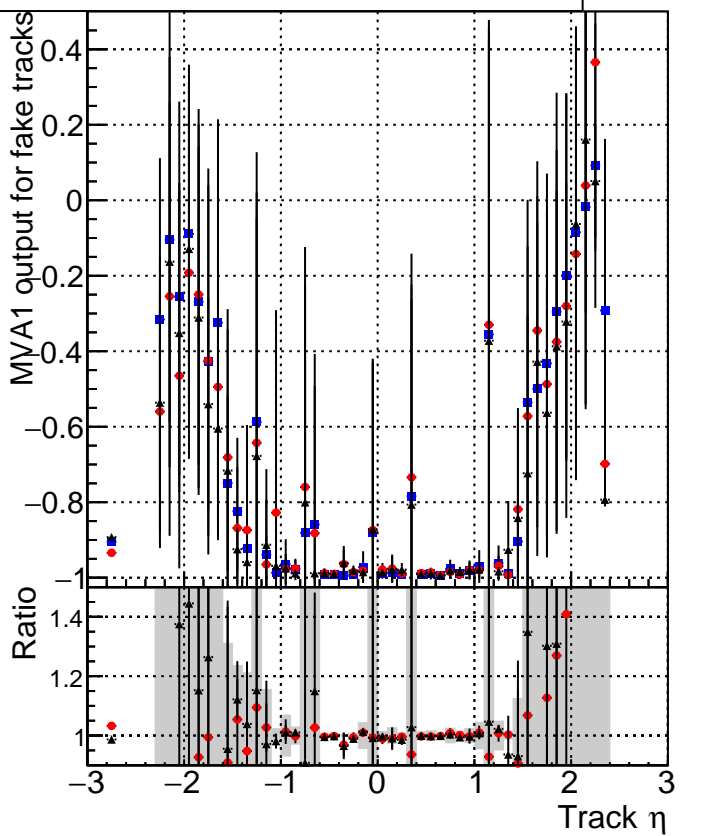
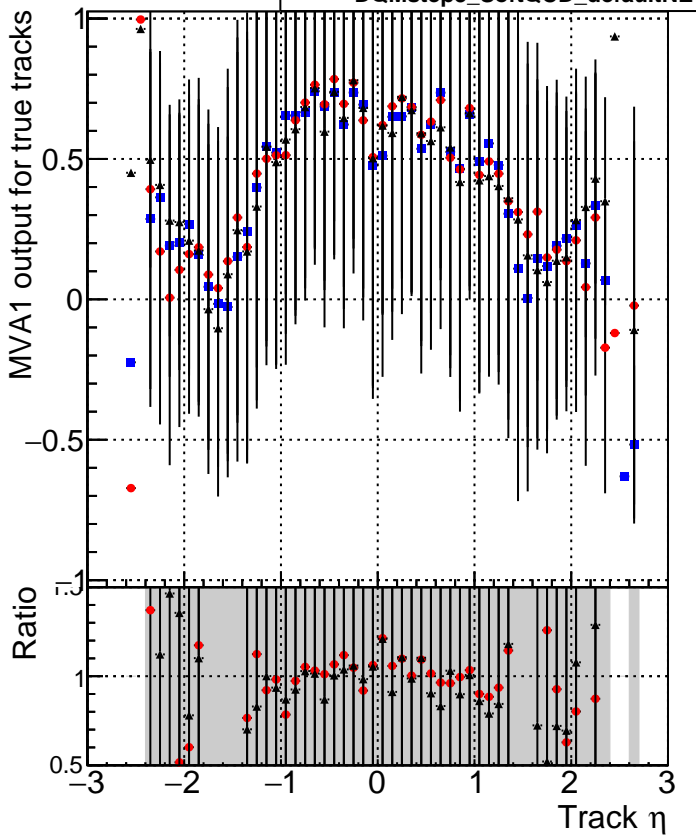
MVA1 of associated tracks (recoToSim) vs. track p_T



MVA1 of non-associated tracks (recoToSim) vs. track p_T



MVA1 of associated tracks (recoToSim) vs. track η



- DQMstep3_SoftQCD_CKF
- DQMstep3_SoftQCD_default
- ▲ DQMstep3_SoftQCD_defaultNEWT2