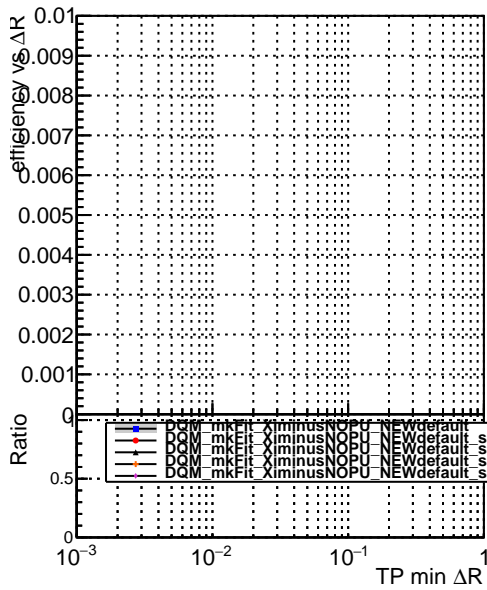
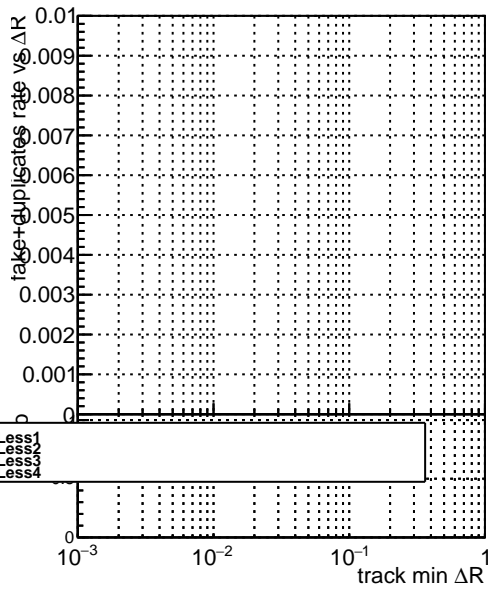
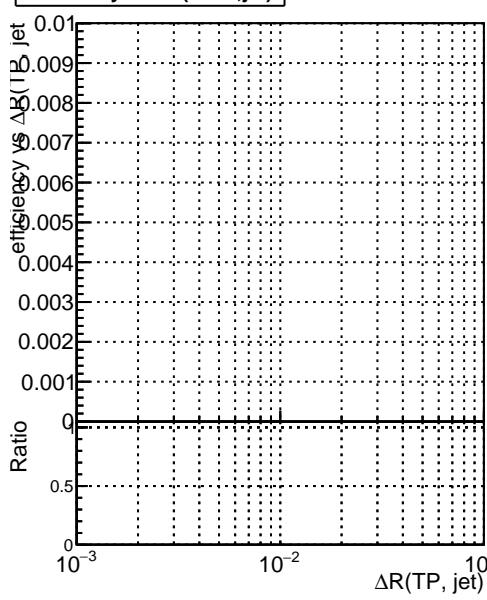
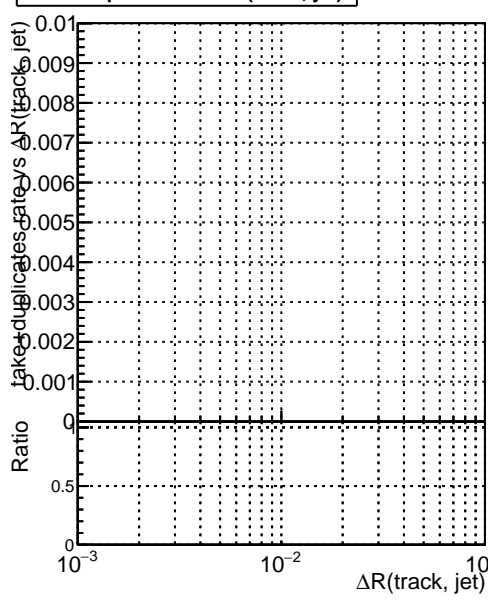
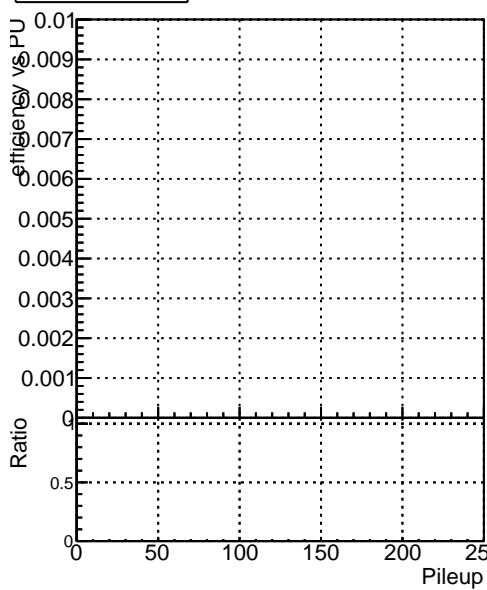
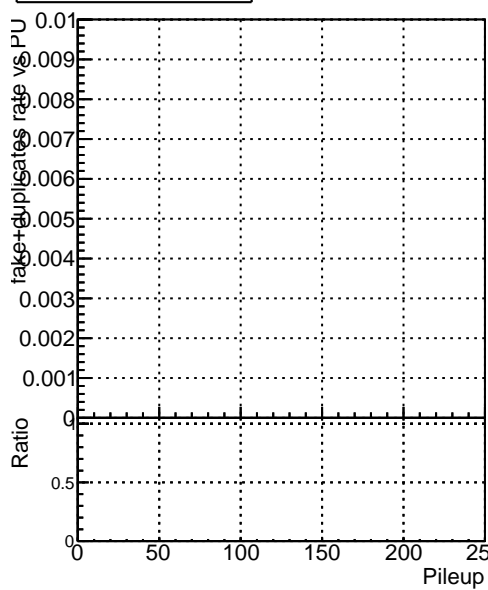


**Efficiency vs dr****fake+duplicates vs  $\Delta R$** **Efficiency vs dr (track, jet)****fake+duplicates vs  $\Delta R(\text{track, jet})$** **Efficiency vs pu****fake+duplicates vs PU**

Legend for all plots:

- DCM mkFit XiminusNOPU NEWdefault spec PLess1
- DCM mkFit XiminusNOPU NEWdefault spec PLess2
- DCM mkFit XiminusNOPU NEWdefault spec PLess3
- DCM mkFit XiminusNOPU NEWdefault spec PLess4